

Download ELDES Configuration Tool - <https://eldesalarms.com/product/configuration-tool/>

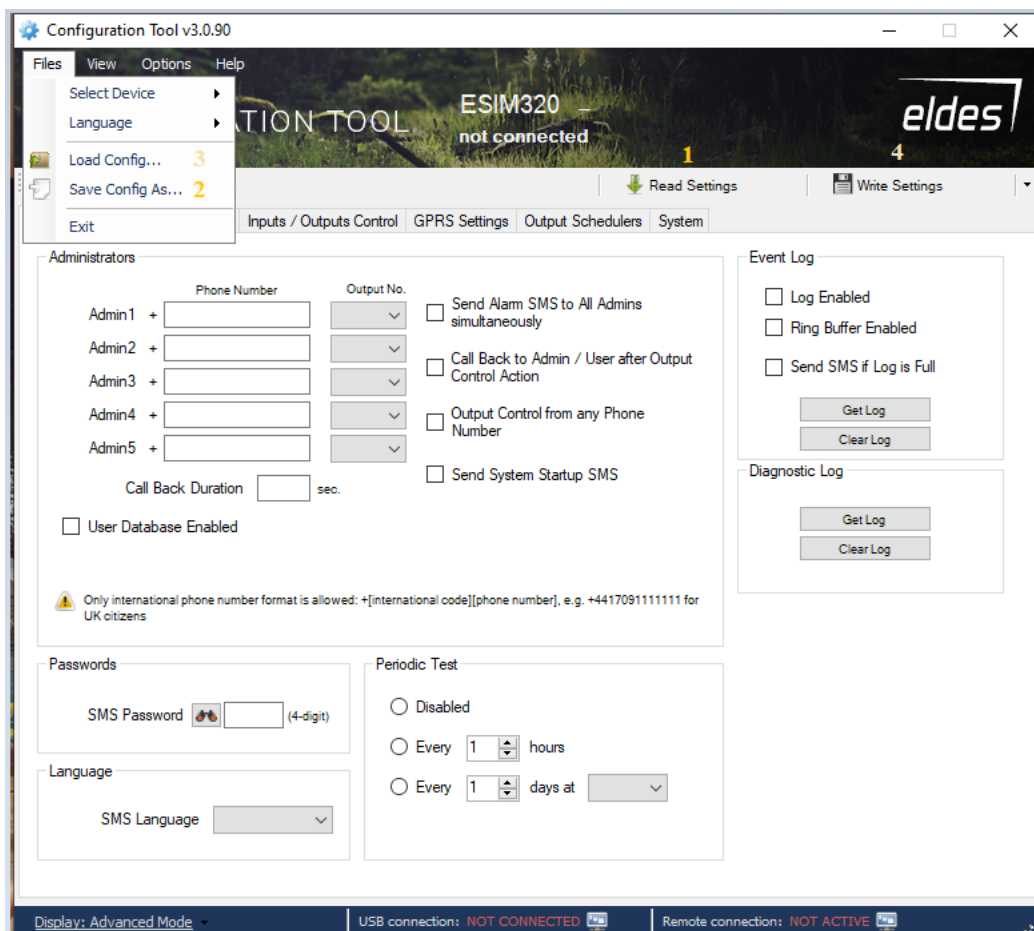
CONFIGURATION SETTINGS

Connect existing device

1. Read Settings
2. Save Config As...

Disconnect the device / Connect new device

3. Load Config...
4. Write Settings



USERS DATABASE

Connect existing device

1. Load From Device
2. Save To File...

Disconnect the device / Connect new device

3. Load From File...
4. Save To Device

The screenshot displays the Configuration Tool v3.0.90 interface. The title bar shows the application name and standard window controls. The menu bar includes Files, View, Options, and Help. The main header area features the text 'CONFIGURATION TOOL' and 'ESIM320 not connected' next to the 'eldes' logo. Below the header is a toolbar with buttons for '>> Start connection...', 'Read Settings', and 'Write Settings'. A tabbed interface shows 'Main Settings', 'Users Database', 'Inputs / Outputs Control', 'GPRS Settings', 'Output Schedulers', and 'System'. The 'Users Database' tab is active, displaying a table with columns: No., User Name, Tel. Number, Output No., Schedulers No. (1-8), Valid Until (Year, Month, Day, Hour, Min), Ring Counter, and Ring Counter Status. The table is currently empty. Below the table is a warning message: 'To start manage user database, it is necessary to load it from device by clicking the 'Load from device' button (even if database is still empty)!'. To the left of the warning is a 'Search Options' section with a 'Search Value' input field, a 'Section' dropdown menu, and a 'Find' button. To the right is a 'Database Management' section with buttons: 'Load From Device' (labeled 1), 'Save To Device' (labeled 4), 'Add', 'Remove Selected', 'Load From File...' (labeled 3), and 'Remove All' (labeled 2). The status bar at the bottom shows 'Display: Advanced Mode', 'USB connection: NOT CONNECTED', and 'Remote connection: NOT ACTIVE'.